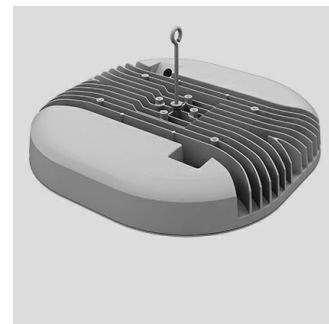
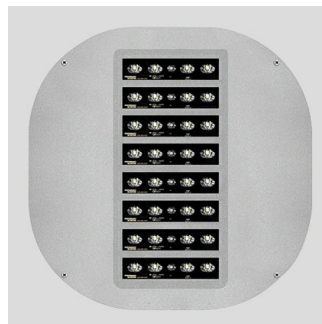


KOA MAXI ELL



Part number	06113194
Lampholder:	LED
Light Source:	LED
Wattage:	270 W
Finish:	GR-94 / Metallic grey / Textured
Insulation class:	I
Degree of protection:	IP66
IK-J-xxIP:	IK10 24J xx9
CRI:	70
Kelvin:	4000
Power factor:	COS ϕ \geq 0,9
Optic:	ELLIPTICAL REFLECTOR
Optic Beam:	90°x45°
Lightsource lumen output:	34560 lm
Luminaire lumen output:	26273 lm
L:	L80
B:	B10
Lifetime:	60000 h
Ta MIN luminaire:	-40°
Ta MAX luminaire:	30°

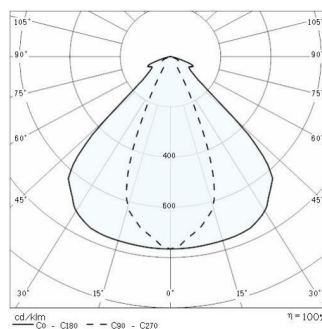


Description

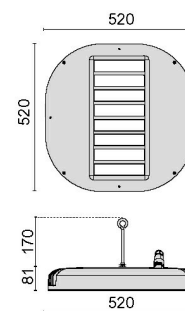
Indoor and outdoor luminaire, comprising:

- Die-cast aluminium housing chemically pre-treated and painted with polyester powder coating
- Diffuser with integrated louvre in UV, heat stabilised, transparent technopolymer
- High-transparency polycarbonate lenses for best light transmission
- Anti-aging silicone gasket with high resiliency
- Electrical connection with outdoor rated plug & socket quick connector (IP66) that allows connection to mains without opening the luminaire. Made in PA66 with silver-plated brass contacts, for cables \varnothing 9 - \varnothing 12 mm
- Light beam obtained by the combination of multiple LED modules
- Galvanised steel M8 suspension hook
- Stainless steel external screws
- Complete with metal safety cable that guarantees suspension of the fixture in case of breakage of the main suspension system
- When using the product within environments where mineral or natural oils are present or in atmospheres that are not compatible with polycarbonate, the protective glass available as accessory shall be used
- On request, versions with DALI dimming
- The dual-hook accessory prevents unexpected and unwanted rotations of the fixture. It's

Photometric data



Technical drawings



especially recommended for elliptical-beam versions

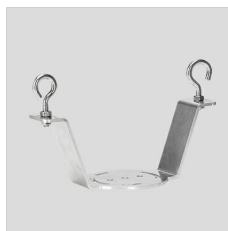
- Photometric data measure according to UNI EN 13032-4 and IES LM-79-08

OPTIONAL ACCESSORIES

KOA



14461220
Shaped hook KOA



14174920
Double hook KOA MINI / MAXI

KOA MAXI



14175020
Bell diffuser KOA MAXI



14175120
Protective glass MAXI